

6 PCB Information

This Section provides parts lists, circuit diagrams and component location information on the individual PCBs within the T3000 Series II radio.

Note: Refer to Section 8, "Intrinsically Safe (IS) Products", for PCB information on IS RF and control.

The following topics and PCBs are covered within this Section:

Section	Title	Page	Frequency (MHz)
6.1	PCB Identification	6.1.2	
6.2	Parts Lists	6.2.1	
6.3	Locating Components	6.3.1	
6.4	T3000-3000, -4000 VCO PCB IPN 220-01283-01	6.4.1	136 to 174 175 to 208
6.5	T3000-3000, -4000 RF PCB IPN 220-01233-03	6.5.1	
6.6	T3000-5000 VCO PCB IPN 220-01284-00	6.6.1	400 to 520
6.7	T3000-5000 PA PCB IPN 220-01286-00	6.7.1	
6.8	T3000-7000 VCO PCB IPN 220-01288-01	6.8.1	300 to 400
6.9	T3000-7000 PA PCB IPN 220-01291-01	6.9.1	
6.10	T3000-5000, -7000 RF PCB IPN 220-01235-04 IPN 220-01235-05	6.10.1 6.10.19	300 to 400 400 to 520
6.11	T3010 control PCB IPN 220-01269-06 IPN 220-01269-08	6.11.1 6.11.15	
6.12	T3020, T3030, T3035 & T3040 control PCB IPN 220-01294-03 IPN 220-01294-09	6.12.1 6.12.17	
6.13	T3000-3000 FCC RF PCB IPN 220-01365-02	6.13.1	146 to 174
6.14	T3000-5000 FCC RF PCB IPN 220-01366-01	6.14.1	450 to 490
6.15	T3000-8000 VCO PCB IPN 220-01311-01	6.15.1	806 to 870 (Tx) 851 to 870 (Rx)
6.16	T3000-8000 RF PCB IPN 220-01327-02/-03 ¹	6.16.1	
6.17	T3000-4400 RF PCB IPN 228-13071-02	6.17.1	250 to 270

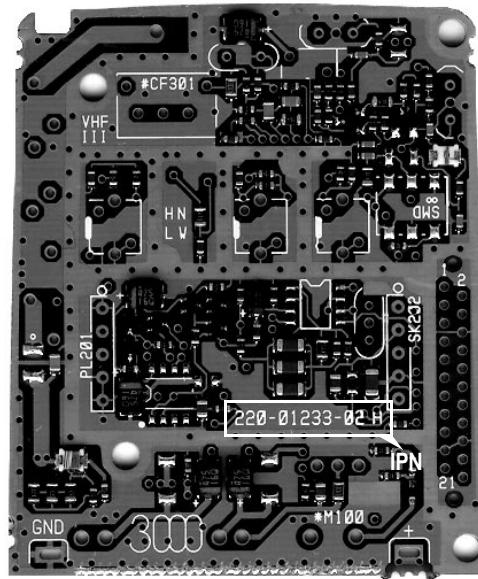
1. The PCB information contained in this Section can be used for both PCB IPN 220-01327-02 and IPN 220-01327-03.

6.1 PCB Identification

All PCBs are identified by a unique 10 digit 'internal part number' (IPN), e.g. 220-01233-02, which is screen printed onto the PCB (usually the top side).

The last 2 digits of this number define the issue status, which starts at 00 and increments through 01, 02, 03, etc. as the PCB is updated. Some issue PCBs never reach full production status, and are therefore not included in this manual. A letter following the 10 digit IPN has no relevance in identifying the PCB for service purposes.

In the following diagram of the T3000-3000/-4000 RF PCB, the IPN is 220-01233-02, (i.e. issue 02 of the PCB).



It is important that you identify which issue PCB you are working on so that you can refer to the appropriate PCB information.